

### Features

- Panel utilizes an integrated system of four 22-nozzle, fully adjustable sprayheads for stimulating hydrotherapy.
- Low-profile design complements any decor.
- MasterClean™ sprayface features an easy-to-clean surface that withstands mineral buildup.
- 0.6 gpm maximum flow rate from each sprayhead for a maximum combined flow of 2.4 gpm.
- ½" NPT connections.

### Material

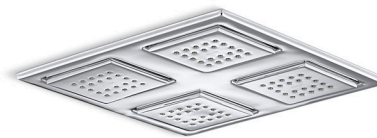
- KOHLER finishes resist corrosion and tarnishing.

### Installation

- Ceiling-mount.
- Soldering template included for ease of installation.

### Recommended Products/Accessories

K-23723 Faucet cleaner



### Codes/Standards





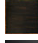

ASME A112.18.1/CSA B125.1  
DOE - Energy Policy Act 1992

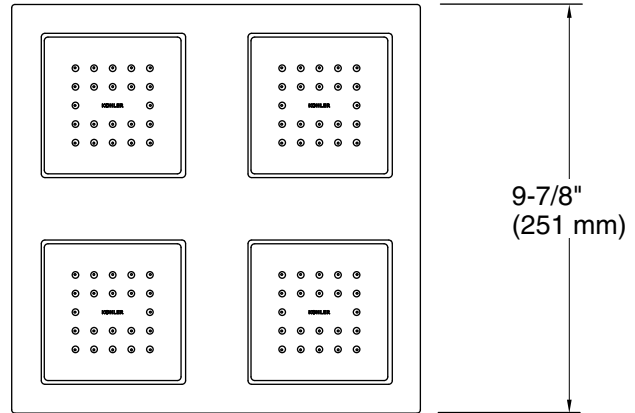
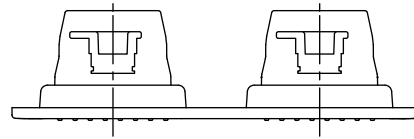
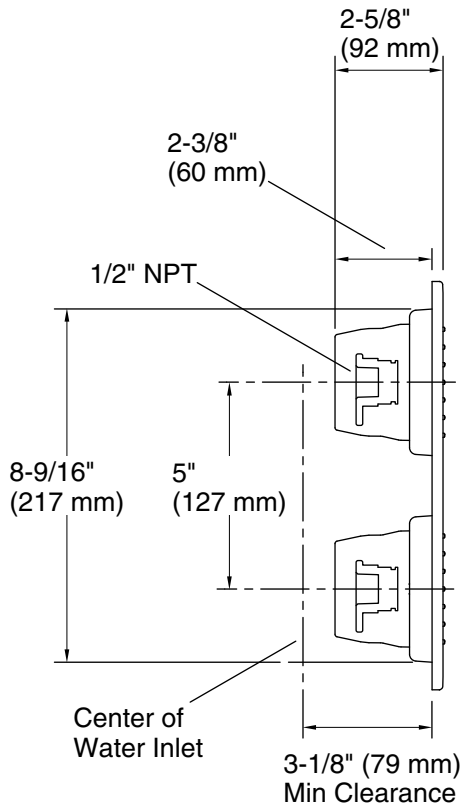
### KOHLER® Faucet Lifetime Limited Warranty

See website for detailed warranty information.

### Available Colors/Finishes

*Color tiles intended for reference only.*

Color	Code	Description
	CP	Polished Chrome
	SN	Vibrant® Polished Nickel
	AF	Vibrant® French Gold
	BN	Vibrant® Brushed Nickel
	BV	Vibrant® Brushed Bronze
	2BZ	Oil-Rubbed Bronze
	BL	Matte Black



**Technical Information**

All product dimensions are nominal.

**Faucet:**

Flow rate: 2.4 gal/min (9.1 l/min)

Pressure: 45 psi (3.1 bar)

**Showerhead/Body Spray:**

Rated maximum flow: 2.5 gal/min (9.5 l/min)

Pressure: 80 psi (5.5 bar)

**Notes**

Install this product according to the installation guide.